

## INSTALLATION INSTRUCTIONS

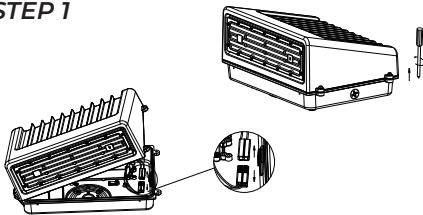
### ⚠ IMPORTANT SAFETY INFORMATION ⚠

(READ CAREFULLY BEFORE INSTALLING FIXTURE)

- ⚡ **RISK OF SHOCK.** Turn off the power supply at the fuse or circuit breaker box before installation.
- ⚡ Proper grounding is required.
- Must be wired in accordance with the National Electric Code and all applicable local codes, by a qualified person familiar with the construction and operation of the product and the hazards involved.



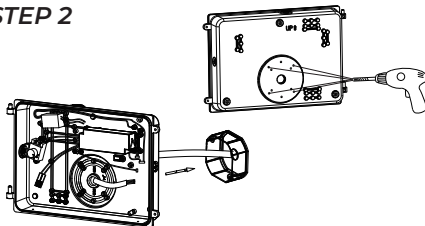
#### STEP 1



### INSTALLATION

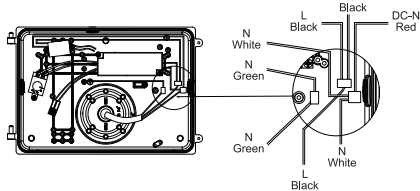
**STEP 1)** Loosen the screws on the cover and take apart the fixture. Pull off the quick-connect terminal between the two panels.

#### STEP 2



**STEP 2)** Drill installation holes at the bottom of light, and paste the EVA mat. Loosen the plug on the bottom plate, pull the wiring through the hole and screw the bottom cover with junction box onto the wall.

#### STEP 3



**STEP 3)** Make wiring connections as follow:

L = Live Wire: Black/Brown

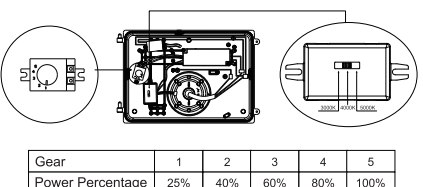
N = Nul Wire: White/Blue

Ground Wire: Green/Yellow-Green

DIM+: Purple DC-L: Black

DIM-: Pink DC-N: Red

#### STEP 4



**STEP 4)** Choose the desired CCT and power percentage from the switches as shown. Plug in quick-connect terminal, and tighten cover.



# 120W LED WALL PACK

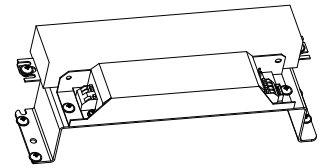
## PF-SL-WP149-120W-BK

**PROTTOFOS**  
LIGHTING MANUFACTURER

### EMERGENCY BATTERY BACKUP INSTALLATION AND SAFETY INSTRUCTIONS

When using electrical equipment, basic safety precautions should always be followed including the following:

- ⚡ Risk of fire or electric shock. Luminaire wiring and electrical parts may be damaged when drilling for installation of LED Emergency Backup. Check for enclosed wiring and components.
- ⚡ Risk of fire or electric shock. This LED Emergency Backup installation requires knowledge of luminaire electrical systems. If not qualified, do not attempt installation. Contact a qualified electrician.
- ⚡ Before installing, make certain the AC power to the fixture is off.
- ⚡ To prevent electrical shock only mate unit connector after installation is complete and before the AC power to the fixture is back on.
- ⚡ Do not connect battery pack connector until all other wiring is complete and AC power is on.
- ⚡ Use with grounded, UL Listed, dry or damp location rated fixtures.



## INSTALLATION

**STEP 1)** Put the assembled emergency package on the corresponding hole of the wall lamp base, and fix it with 4PCS PWM4\*6 screws (as shown in the figure 1).

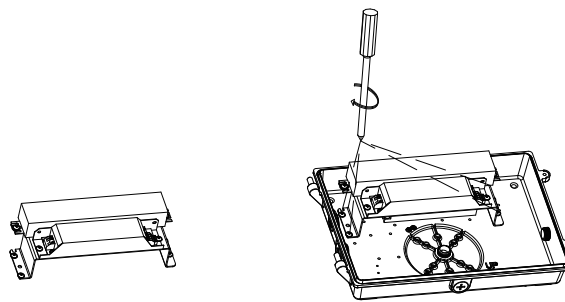


figure 1

**STEP 2)** For wiring, please refer to the schematic diagram of wiring instructions (as shown in the figure 2).

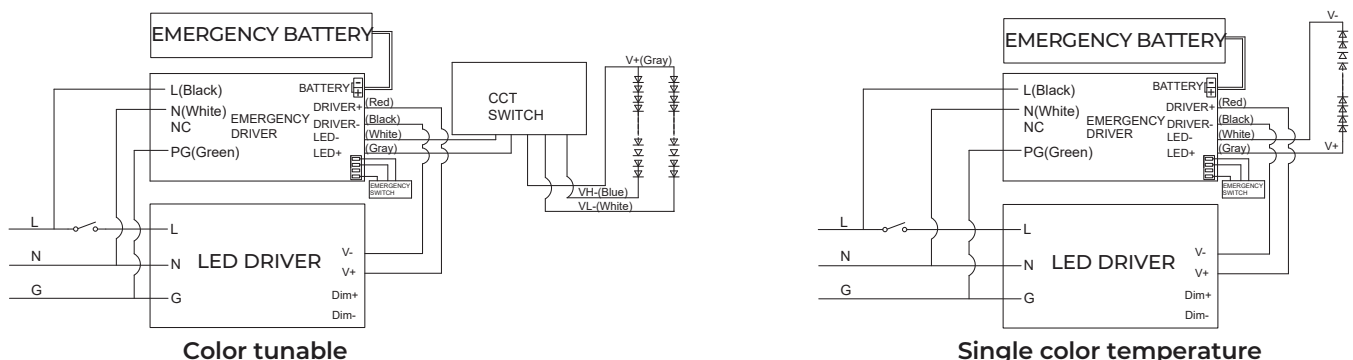


figure 2



Prottofos Corporation  
[www.prottofos.com](http://www.prottofos.com)

11350 Old Roswell Rd, Ste 1100, Alpharetta, GA 30009  
Information contained here is subject to change without notice