

2' / 4' / 6' LED LINEAR SURFACE MOUNT



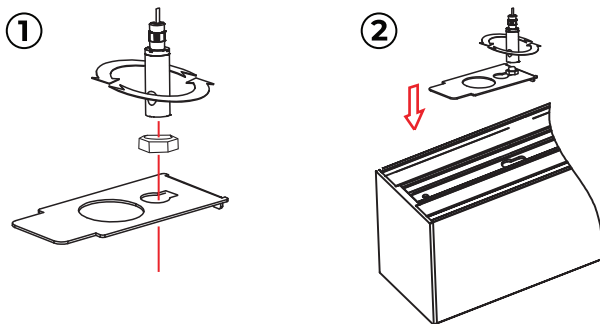
DESCRIPTION

The Prottofos family of LED Surface Mount lights boasts a sleek, streamlined design, making them ideal for corridors, classrooms, or any high-traffic areas. This modular system offers flexible configuration options, allowing for rows, shapes, or custom patterns.

SPECIFICATIONS

SKU	SEE ORDERING INFORMATION
FINISH	WHITE
OTHER FINISHES	CUSTOM
COLLECTION	N/A
MATERIAL	ALUMINUM
DIFFUSER	POLYCARBONATE FROSTED

ADDITIONAL INFORMATION



ORDERING INFORMATION

2' SKU: PF-SM-2432-20W-WH-DN

4' SKU: PF-SM-4732-40W-WH-DN

6' SKU: PF-SM-7332-60W-WH-DN

PRIMARY LIGHTING

LIGHT SOURCE	2': 20W 4': 40W 6': 60W
LUMENS	110 LM
VOLTAGE	120V - 277V
COLOR TEMP	3500K / 4000K / 5000K
CRI	80

DIMENSIONS

MODEL	2'	4'	6'
LENGTH	24.06"	47.48"	72.50"
WIDTH	2"	2"	2"
HEIGHT	3.15"	3.15"	3.15"
WEIGHT	4.1 LBS	8.2 LBS	12.3 LBS

